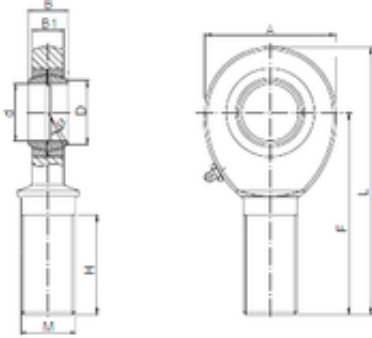




BEARING BOWER CORP.

18 mm x 21,8 mm x 23 mm ISO SA 18 plain bearings



Bearing No. SA 18

Bore Diameter	18 mm
d	18 mm
B	23 mm
A	46 mm
B1	16,5 mm
D	21,8 mm
F	72 mm
H	44 mm
L	95 mm
Bolt (G)	M18x1,5

SA 18 Bearing 2D drawings and 3D CAD models