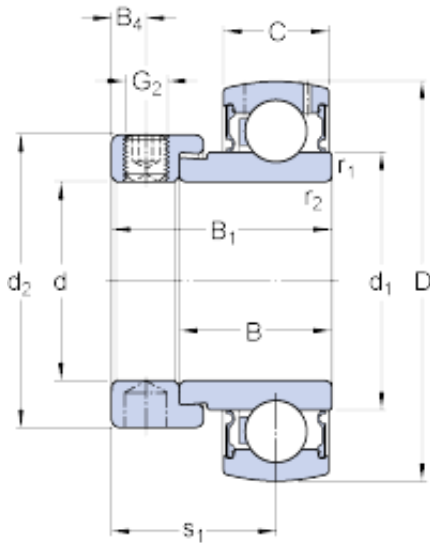




BEARING BOWER CORP.



E2.YET 209-111 Bearing 2D drawings and 3D CAD models

42.863 mm x 85 mm x 30.2 mm SKF E2.YET
209-111 deep groove ball bearings

Bearing No. E2.YET 209-111

Size	85x42.863x43.7 mm
Bore Diameter	85 mm
Outer Diameter	42,863 mm
Width	43,7 mm
d	42.863 mm
D	85 mm
B ₁	43.7 mm
C	22 mm
d ₁	56.8 mm
d ₂	62 mm
B	30.2 mm
B ₄	6.75 mm
r _{1,2} - min.	1 mm
s ₁	32.7 mm
Basic dynamic load rating - C	33.2 kN
Basic static load rating - C ₀	21.6 kN
Fatigue load limit - P _u	0.915 kN
Limiting speed with shaft tolerance h6	4300 r/min
Calculation factor - f ₀	14
Mass bearing	0.69 kg
Thread - G ₂ - 3/8-24 UNF	3/824 UNF
Hexagonal key size for grub screw - H	4.762 mm



BEARING BOWER CORP.